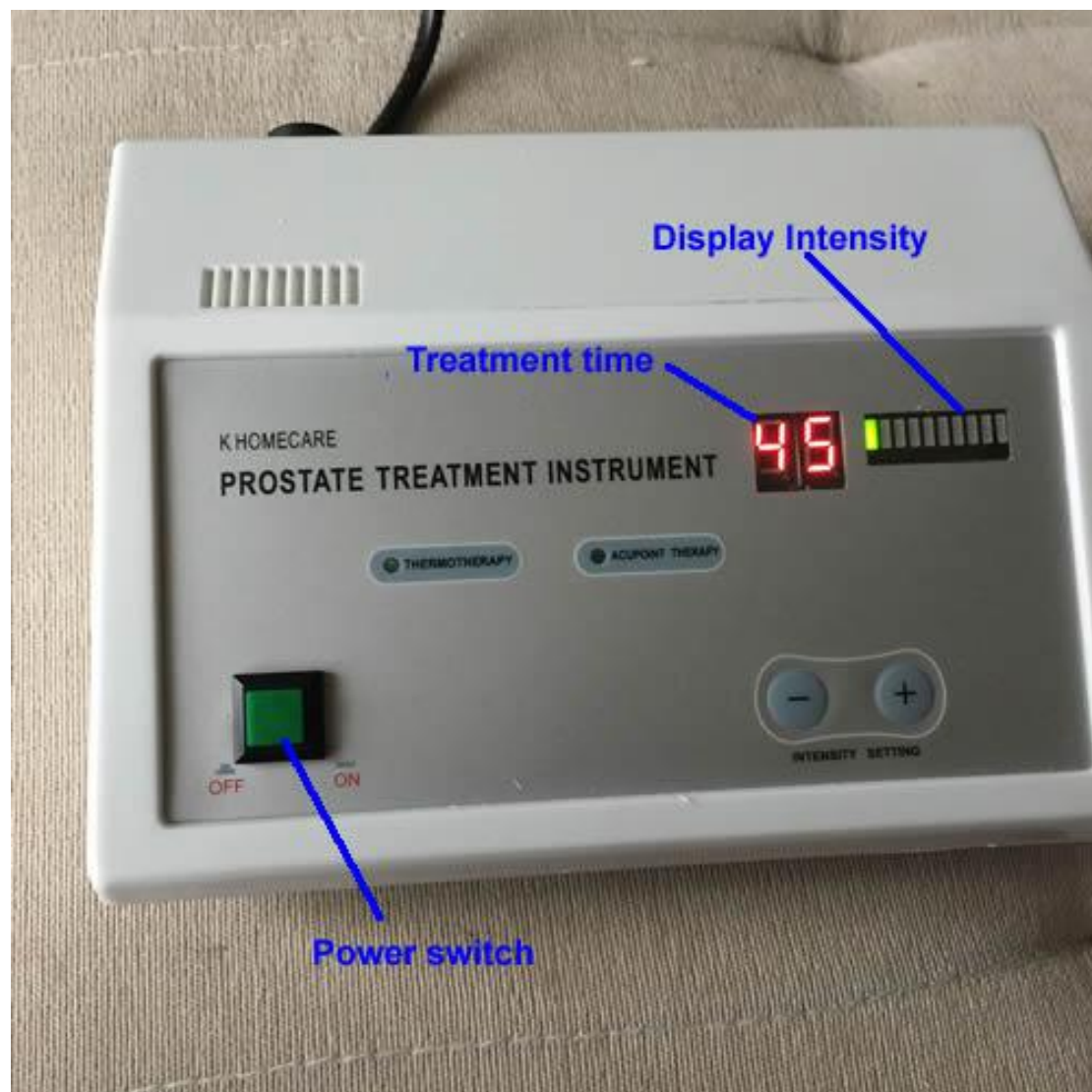


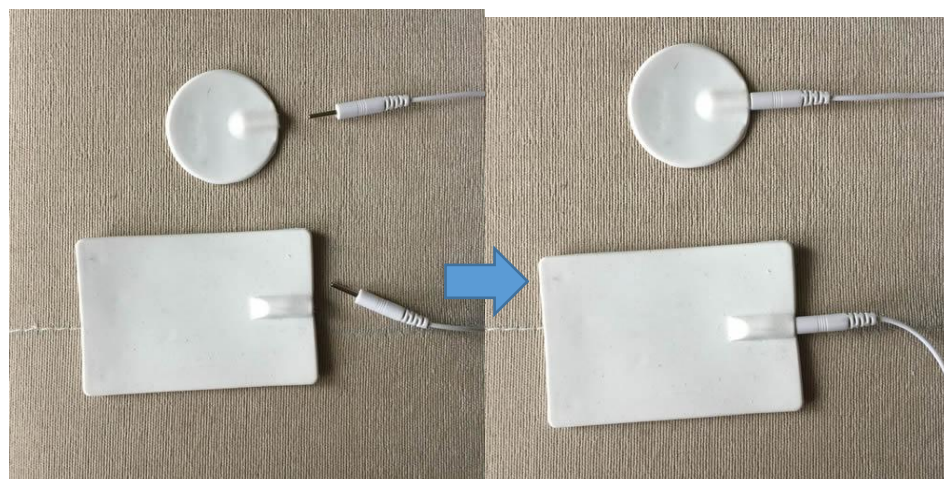
HOW TO USE THE PROSTATE TREATMENT INSTRUMENT ?

STEP ONE: Turn on the prostate treatment instrument POWER switch , the default treatment time is 45 mins .

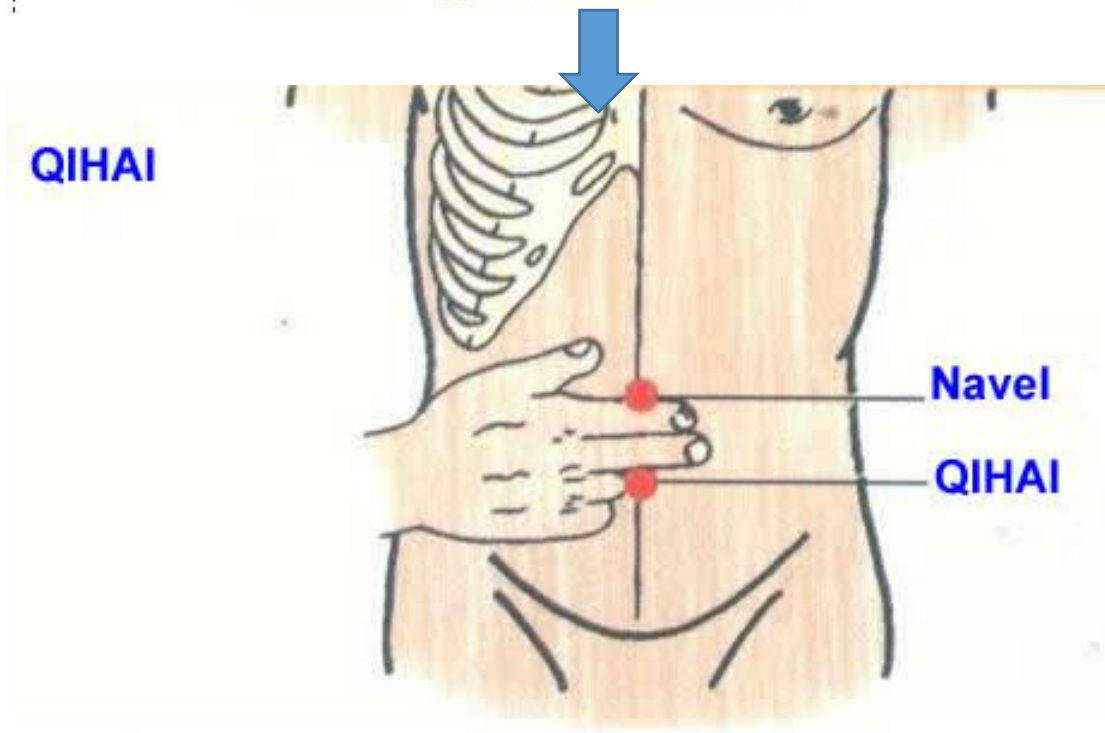


STEP TWO:

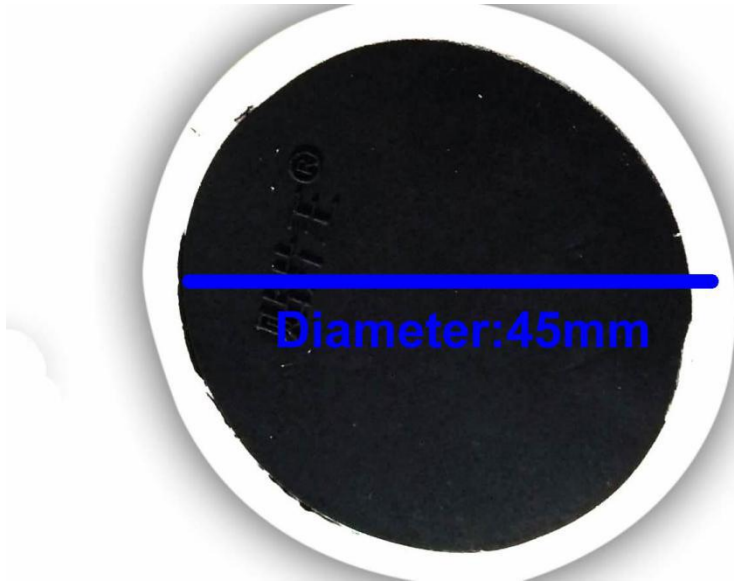
1.) make the rectangle and round electrode connect to the wire

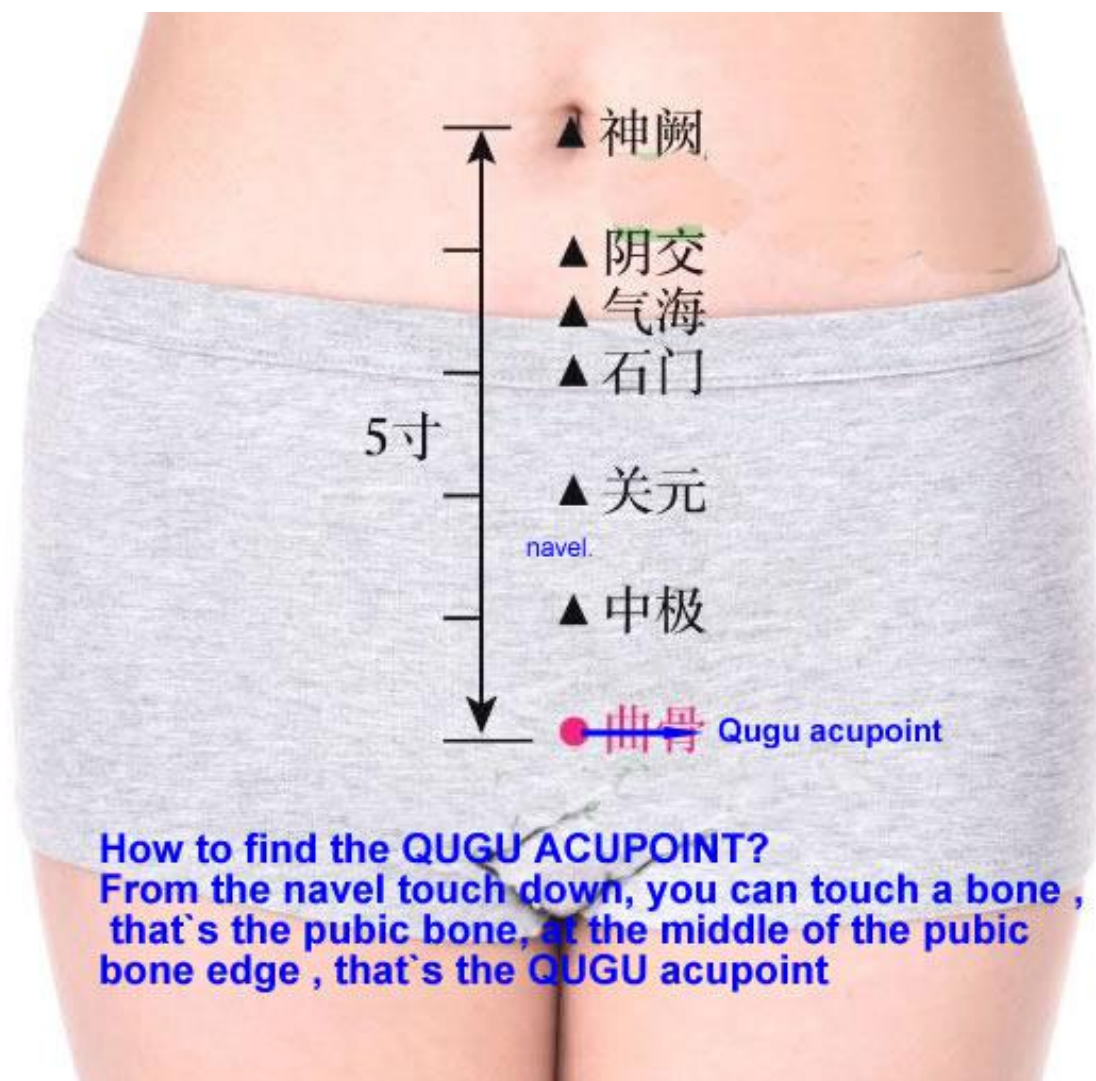


2.) Putting the rectangle electrode on the QIHAI ACUPOINT

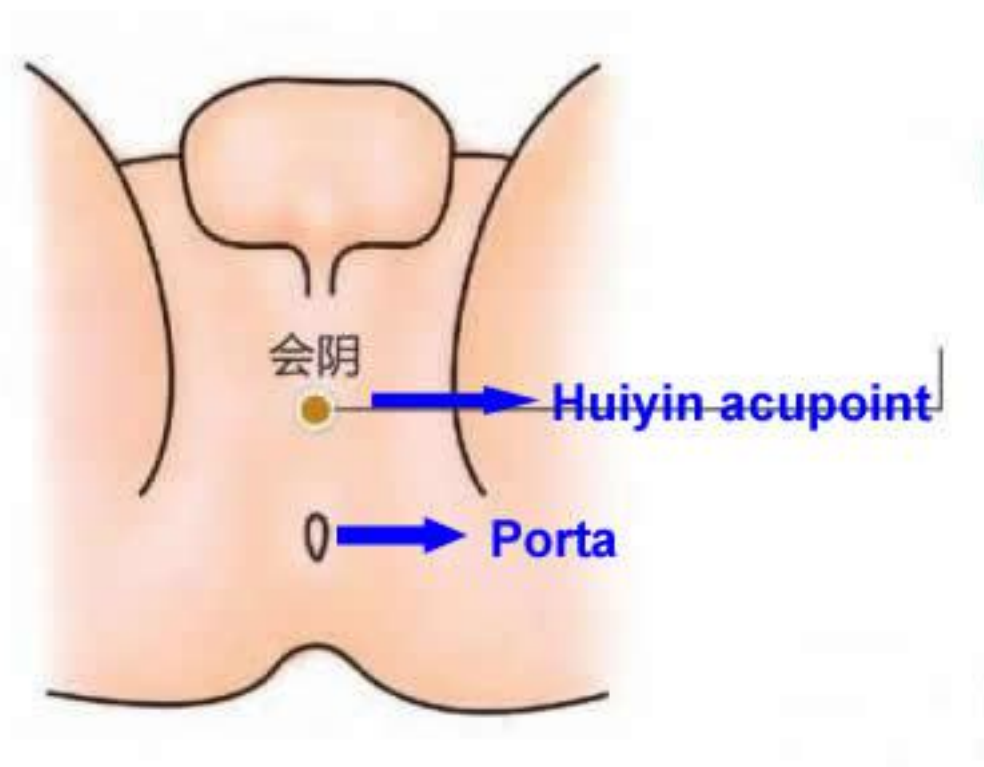


3.) Putting the round electrode at the QUGU acupoint **OR** Huiyin Acupoint

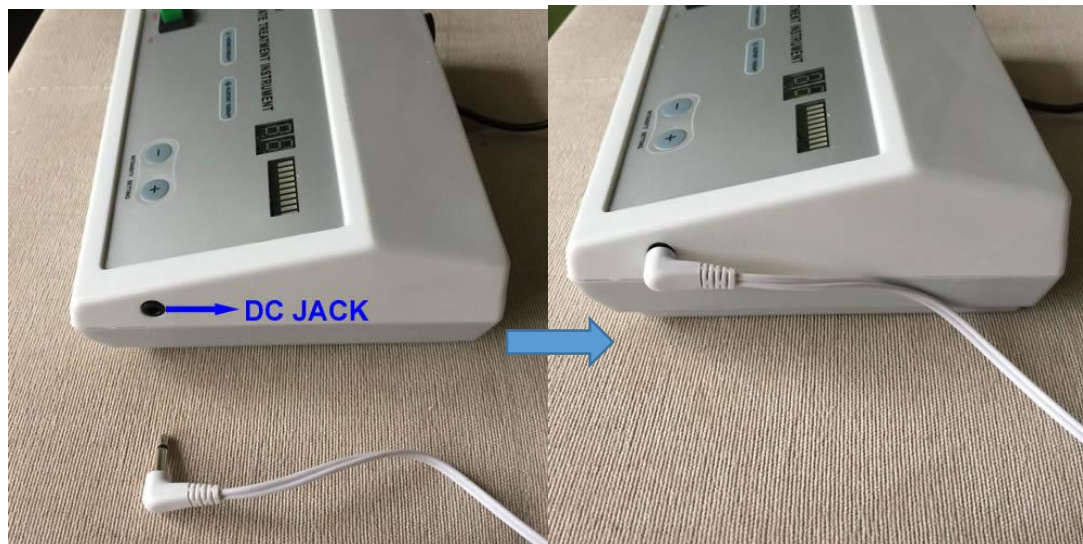




How to find the Huiyin Acupoint?



then fixed with elastic pants , and insert the wire into the jack of the machine



STEP THREE:

Adjust the treatment intensity , press “+” , then the treatment time begin to count down , we can increase the

intensity until we can suffer it. Treatment 5 minutes , when our body suit the intensity , we can increase the intensity . We should adjust the intensity high or low from time to time, to be sure it's the maximum intensity which we can suffer it . Because everyone`s sensitive are difference.

If you are the sensitive skin type , and the output intensity can't be increase, then the treatment time should extend , until the treatment acupoint fever



STEP Four: when the treatment time is finished , the time show is “00” , the machine buzzer prompts the treatment is over , and the output strength to zero.

STEP FIVE : When the the treatment is over, BE SURE NO OUTPUT , then take off the elastic shorts , and remove the electrode .

STEP SIX :Finally , turn off the power switch.

Product size and clinical results as following:



Clinical study:

Symptom		After 5 times treatment	After 10 times treatment	Effective case ratio		inefficiency case ratio		inefficiency case ration	
Obstruction of urination	35	15	5	26	74.3	5	14.3	4	11.4
Urination simulation	45	10	3	35	78.0	7	16.0	3	6.0
Pelvic pain	24	10	2	17	70.8	5	20.8	2	8.4
Unconscious urination	4	2	1	2	50.0	1	25.0	1	25.0
Comprehensive evaluation	108			80	74.0	18	17.0	10	9.0